



CREATIVE C
arts
CAMP



CAMP HANDBOOK

BROUGHT TO YOU BY



THALIAN
ASSOCIATION
COMMUNITY THEATRE

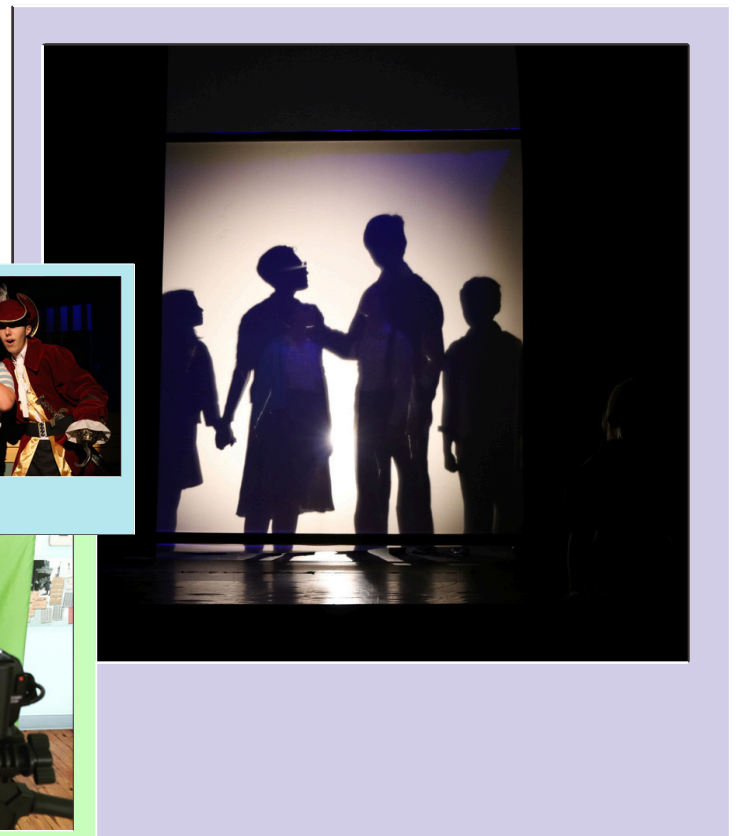
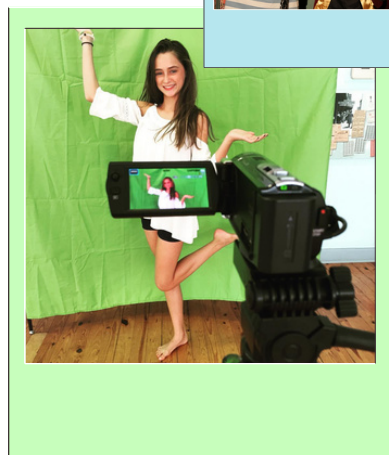


SUMMER CAMP HANDBOOK

Hello and welcome to Creative Arts Camp, brought to you by Thalian Association Community Theatre!

We are excited to have your child join us and we are looking forward to a fun filled summer. Our goal is to provide a place where your child can create, learn, and grow! We hope your child will make new friends in a fun, safe environment they look forward to returning to each day. Please carefully review all of the information in this packet, and review our behavioral policies with your child. We will also review these each week of camp. If you have any questions, please feel free to contact me.

Sincerely,
Stacie Smith
Summer Camp Director
910.251.1788
ssmith@thalian.org





IMPORTANT DATES

Summer Camp Schedule

Week 1

June 15-19, 2026

Week 2

June 22-26, 2026

Week 3

June 29-July 3, 2026

Week 4

July 6-10, 2026

Week 5

July 13-17, 2026

Week 6

July 20-24, 2026

Week 7

July 27-31, 2026

Week 8

August 3-7, 2026

Week 9

August 10-14, 2026

BOSS Camp Show Dates

Magic Tree House:

Dinos After Dark

July 17th at 7pm

July 18th at 2pm

Disney's High School Musical Jr

July 31st at 7pm

August 1st at 2pm

Disney's Dare to Dream

August 14th at 7pm

August 15th at 2pm

Friday Showcases

June 19th at 11:30am

June 26th at 11:30am

July 3rd at 11:30am

July 3rd at 11:30am

July 10th at 11:30am

July 17th at 11:30am

July 24th at 11:30am

July 31st at 11:30am

August 7th at 11:30am

August 14th at 11:30am





WHAT TO EXPECT AT CAMP?

Creative Munchkins, Rising Stars, and Old Pros

8:30 - 9:00am | Drop off

9:10-10:30am | Warm ups, creative play games, art activity

10:30 -10:45am | Snack break (Must bring snack)

10:45 - 11:30am | Showcase rehearsal

11:30 - 11:55am | Clean up and ending activity

12:00-12:20pm | Pick up for morning campers

12-1pm | Supervised lunch for full day campers

12:40-1:00pm | Drop off for afternoon campers

1:00 - 2:30pm | Afternoon warm up, brainstorm, art activity

2:30 - 2:45pm | Snack Break (Must bring snack)

2:45 - 3:30pm | Continue with project for Friday's show

3:30 - 3:55pm | Clean up and ending activity

4:00 - 4:20pm | Camper Pick up

BOSS Camp

8:45 - 9:00am | Camper Drop off

9:10-10:30am | Warm ups, vocal and movement

10:30-10:45am | Snack break (Must bring snack)

10:45am -12pm | Rehearsal

12 - 1:00pm | Supervised lunch, Free Play

1:00 - 2:30pm | Rehearsal

2:30 - 2:45pm | Snack Break (Must bring snack)

2:45 - 3:30pm | Rehearsal

3:30 - 3:55pm | Clean up and ending activity

4:00 - 4:20pm | Camper Pick Up

SCHEDULE

CREATIVE C arts CAMP

WHAT TO BRING & NOT BRING TO CAMP?

What to wear: Please wear comfy clothes for creative movement, games, and exercises! Instructors will give more direction later in the week if campers need to wear something specific for their showcase costumes.

Shoes: Please do NOT wear flip-flops or sandals. All campers need to be in closed toe shoes -this is a safety issue.

Water Bottles: Campers need to bring their own water bottles with them. There are 2 water fountains in the building.

Food: Half-Day Campers need to bring 1 snack every day. Full- Day Campers need to bring 2 snacks and a lunch everyday.

Money(optional): There are drinks and snacks available for purchase (cash only) at the concession stand ranging between \$0.50-\$2.00. You can also purchase tickets for your camper to use at the snack stand if you wish to not send money with your camper.

What NOT to bring: Cell Phones and all electronic devices are prohibited to be used during the Summer Camp program. We encourage that your child does not bring them to camp. If a child brings a cell phone or electronic device to camp, we will ask that they be turned off and stored with their belongings. If you, as a parent/legal guardian, need to contact your child during the day, please call the office at 910.341.7860



All campers are expected to follow basic rules of behavior, including respecting themselves, others, and equipment/materials. Staff members will review our behavior policies with all campers at the start of each week. We will not tolerate disrespectful behavior, bullying, foul language, or violence of any sort.

1. Be respectful of others
2. Listen to Camp Staff -- there will be plenty of time to play/have fun. When STAFF is speaking, you should be listening.
3. Call & Response - when you hear the call , STOP what you are doing, and respond. Each camp has their own call & response that you will learn on day 1.
4. Participate in all activities -- we ask that all campers try to participate in each activity that is presented to them by their instructors/counselors.
5. Keep your hands to yourself.
6. No running - unless told to do so.
5. Have fun!



BRAVO!





Behavior Issues Policy

Disruptive Behavior | During the program if a child acts inappropriately as determined by the Summer Camp Staff, the child will sit out for 5 minutes and then can request to rejoin the activity. This is their first warning.

If the same child continues to act inappropriately after their first warning has been issued, the child will sit out for 10 minutes. This is their second warning.

If the same child has not changed their behavior as a result of the first two warnings, the child will sit out for the rest of that camp/or amount of time determined by Summer Camp Staff.

On the third warning, the camper will be brought to the office and the parent will be notified of their child's inappropriate behavior upon pickup at the conclusion of camp on the day of the inappropriate behavior. If a child has a reoccurring theme of inappropriate behavior, then they will be considered for dismissal from the program.

Pushing/Shoving/Hitting | In the event that a child should push or shove another participant intentionally, the following action will occur; after the incident, the child will sit out of that activity during that camp, this is their first warning.

If the behavior continues, the child will sit out the remainder of the day, this is their second warning. The parents/ legal guardian will be notified of this situation upon arrival.

After the second warning, if the behavior continues, the child will be suspended from the Summer Camp Program for one day after the day of the incident. If this behavior continues after the child returns, the child could be permanently dismissed from the program

Please Note: If you child is suspended from camp, full payment is still due for that week.



Check In Procedure

Morning Check In

The doors will open for check in from 8:30-9:05am.

Campers must check in each day.

When checking in, please know which camp your camper is in -

Creative Munchkins, Rising Stars, Old Pros, or BOSS Camp.

Once checked in, campers will be escorted to their classroom by CAC Staff.



Afternoon Check In

The doors will open for check in from 12:40-1:05pm.

Campers must check in each day.

When checking in, please know which camp your camper is in -

Rising Stars, Old Pros, or BOSS Camp.

Once checked in, campers will be escorted to their classroom by CAC Staff.

Day 1 Camp Check-List:

- _____ Camp Medical and Emergency Care Form
- _____ Assumption of Risk and Liability Waiver
- _____ Payment - must be paid the Friday prior to camp
- _____ Approved Pick Up List
- _____ Water Bottle
- _____ Snacks & Lunch





AM Camps Check Out Procedure

Check out begins at 12pm. If you need to pick up a camper early, please do so before 11:50am. Between 11:50am-12pm we may not be able to accommodate early pick ups do to getting ready for check out at 12pm.

CAC Staff will be available for questions.

Line up on the right side of the lobby, by the concessions stand. All camps will dismiss from the same location.

Have the name of your camper, name of their camp, and your ID ready. You must be on the approved pick up list to leave with a camper. If you are not listed, you will not be able to leave until a parent/guardian has been contacted.

Once you have checked out with CAC staff, you will be directed to pick up your camper at the door on the left side of the lobby.

Pick Up

Check Out





Full Day & PM Camps Check Out Procedure

Check out begins at 4pm. If you need to pick up a camper early, please do so before 3:50pm. Between 3:50-4pm we may not be able to accommodate early pick ups do to getting ready for check out at 4pm.

CAC Staff will be available for questions.

Line up on the right side of the lobby, by the concessions stand. All camps will dismiss from the same location.

Have the name of your camper, name of their camp, and your ID ready. You must be on the approved pick up list to leave with a camper. If you are not listed, you will not be able to leave until a parent/guardian has been contacted.

Once you have checked out with CAC staff, you will be directed to pick up your camper at the door on the left side of the lobby.

Pick Up

Check Out





FAQ



Full Day camps \$200/week
Half Day camps \$110/week
BOSS Production Camps \$395/session
\$20 one time registration Fee - includes camp t-shirt!



Full day camps from 9:00am–4:00pm
Morning camps from 9:00am-Noon
Afternoon camps 1:00pm–4:00pm



Camp counselors are on site starting at
8:30am and stay until 4:20pm.



Creative Munchkins 4-6 year old (half day only)
Rising Star Series 7- 10 year old (full and half day)
Old Pro Series 10-14 year old (full and half day)
BOSS Camp 7-17 year old (full day, 2 weeks only)



Thalian Association Community
Theatre's Tax ID# is 56-0939043



At the Community Arts Center in the Hannah Block Historic
USO Building, 120 South 2nd Street (on the Corner of
Orange St and 2nd St.)



Important Contacts & Info

Stacie Smith

Camp Director

ssmith@thalian.org | 910.251.1788

Logan Hayes

Asst. Camp Director

lhayes@thalian.org | 910.251.1788

Susan Habas

Thalian Association Community Theatre Executive Director

shabas@thalian.org | 910.251.1788

Camp Location

Community Arts Center

120. S 2nd Street. Wilmington, N.C. 28401

910.341.7860



The building is locked between 8am-4pm. If you need to pick up a camper early, please call 910.251.1788